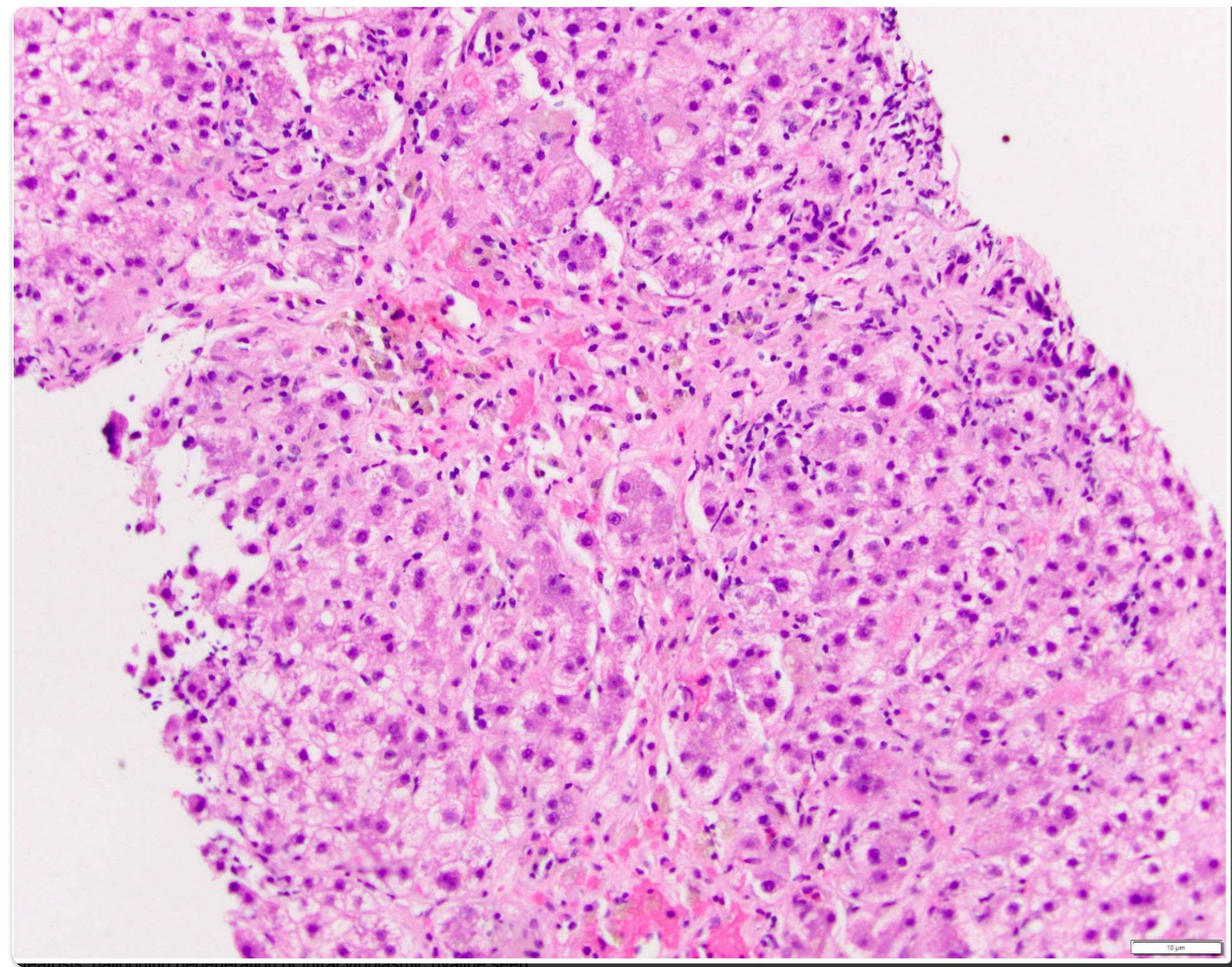
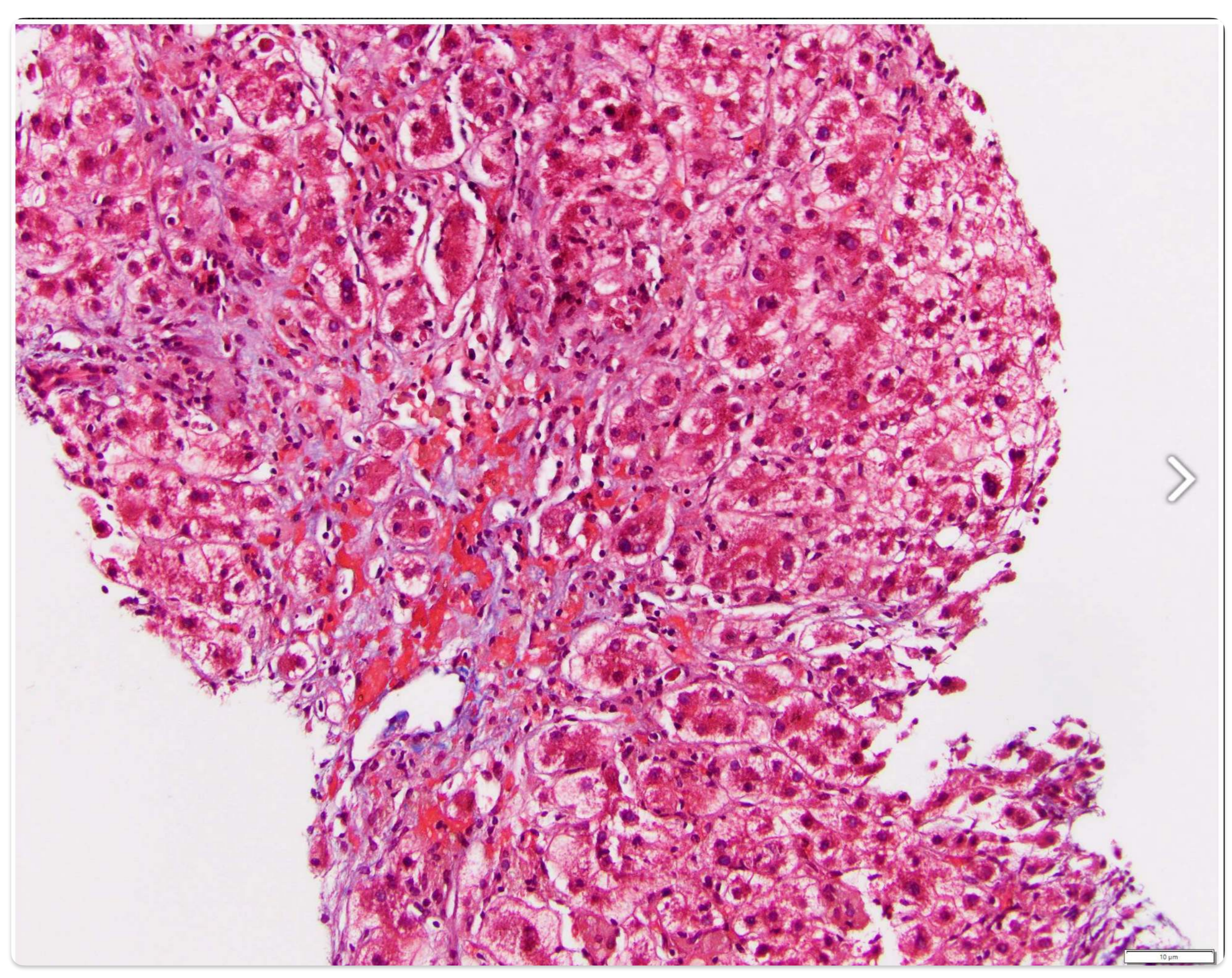
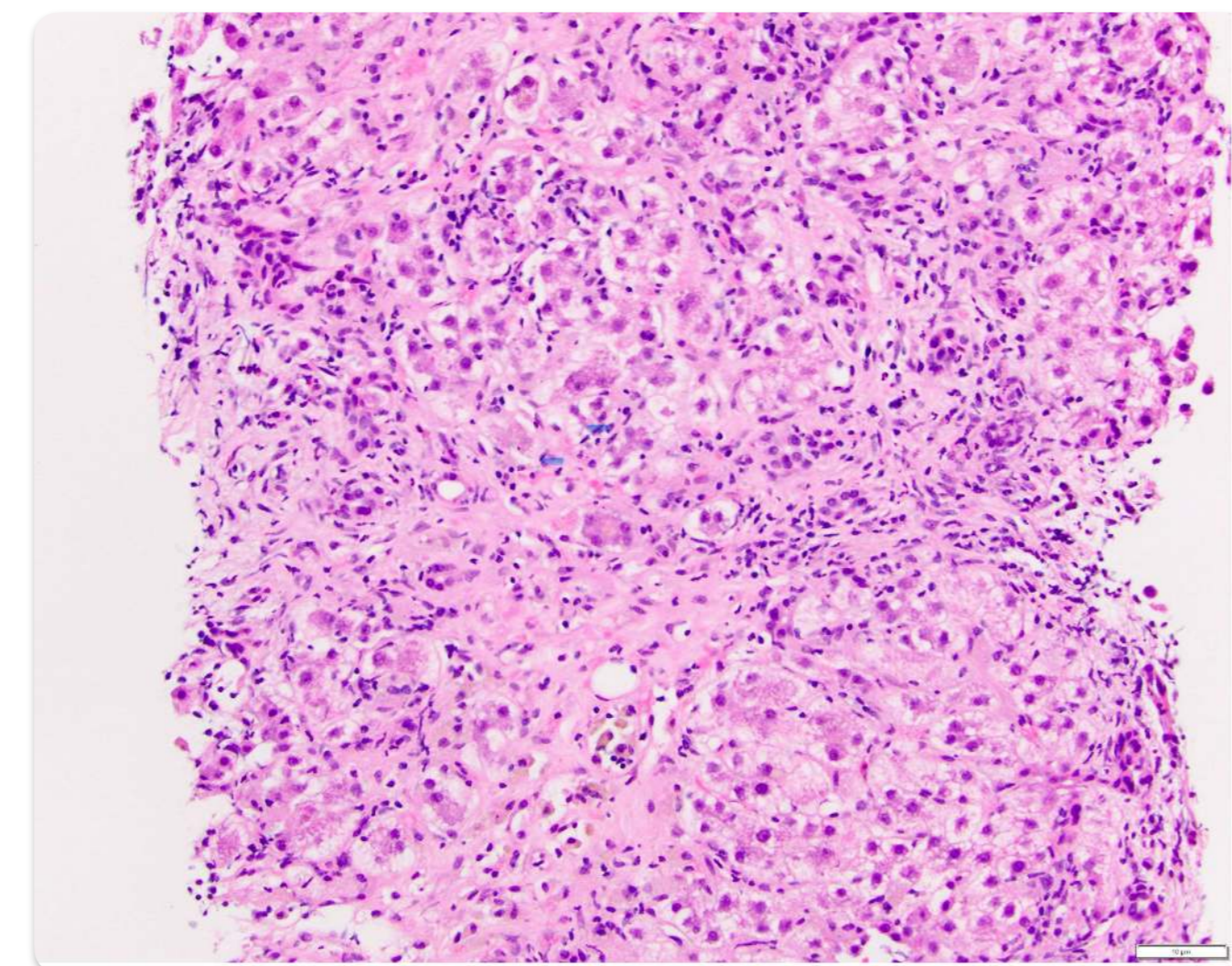
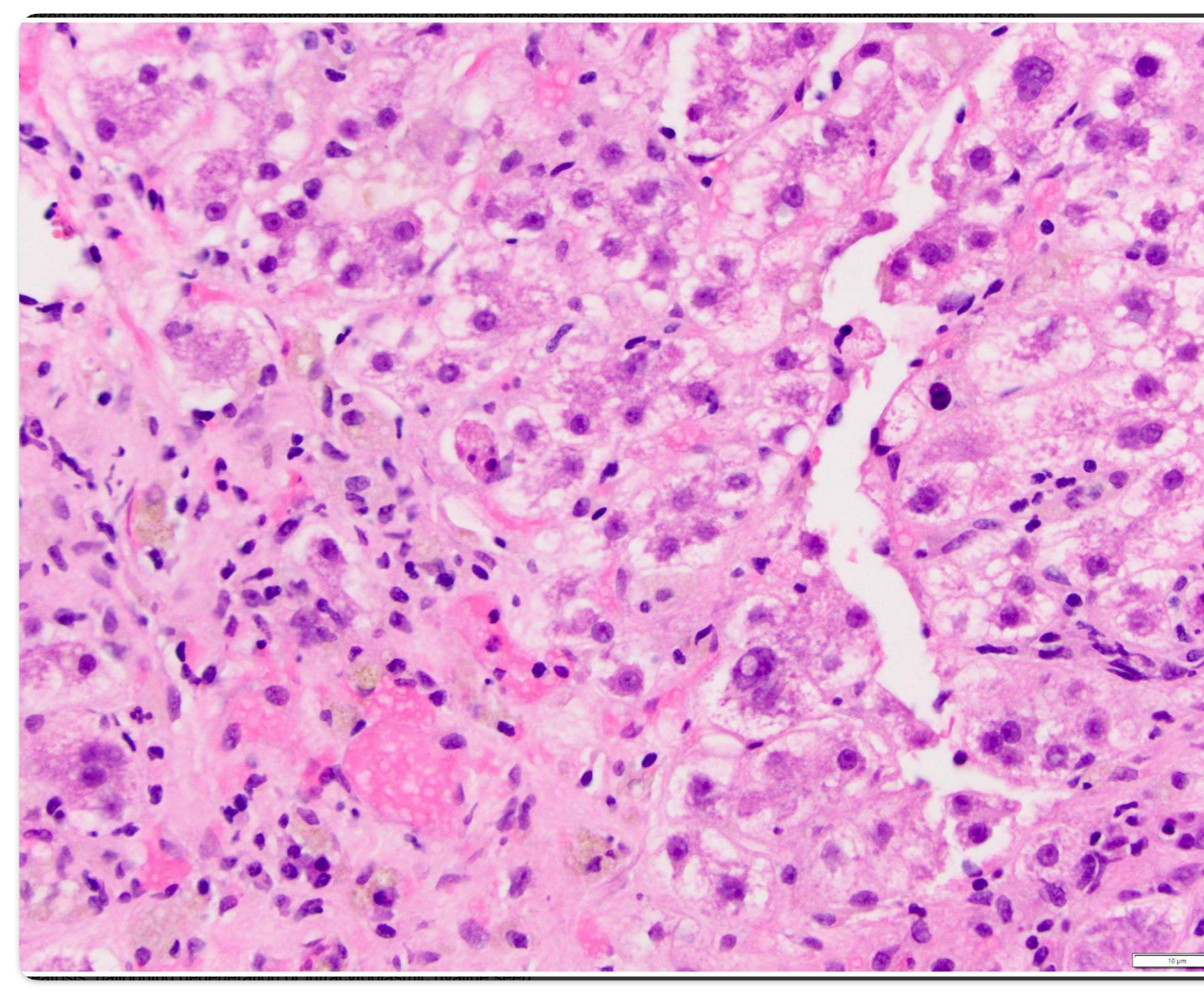


Trichrome stain shows absence of organized fibrosis, confirming dropout, instead of fibrosis.
Contributed by Monika Vyas, M.D



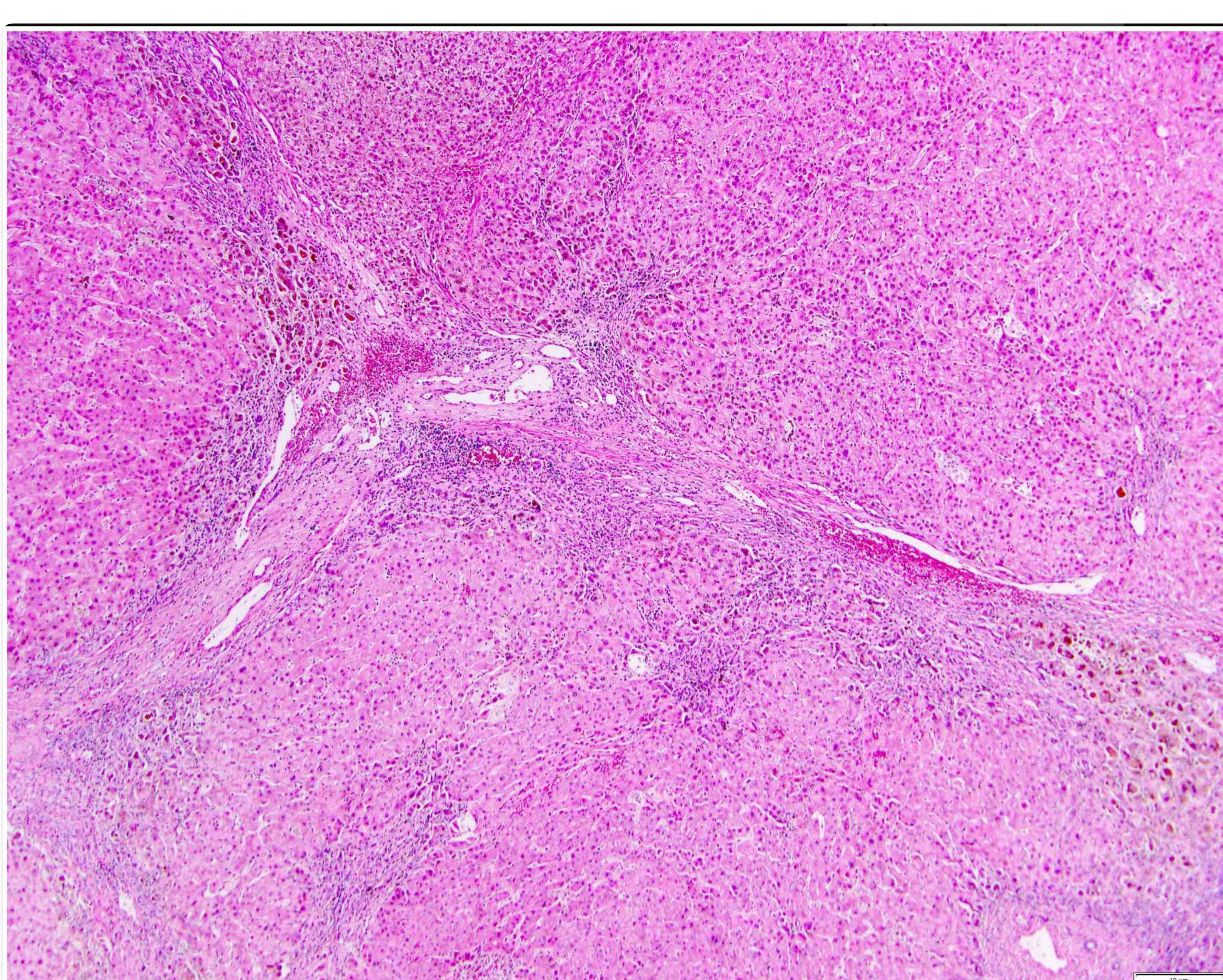
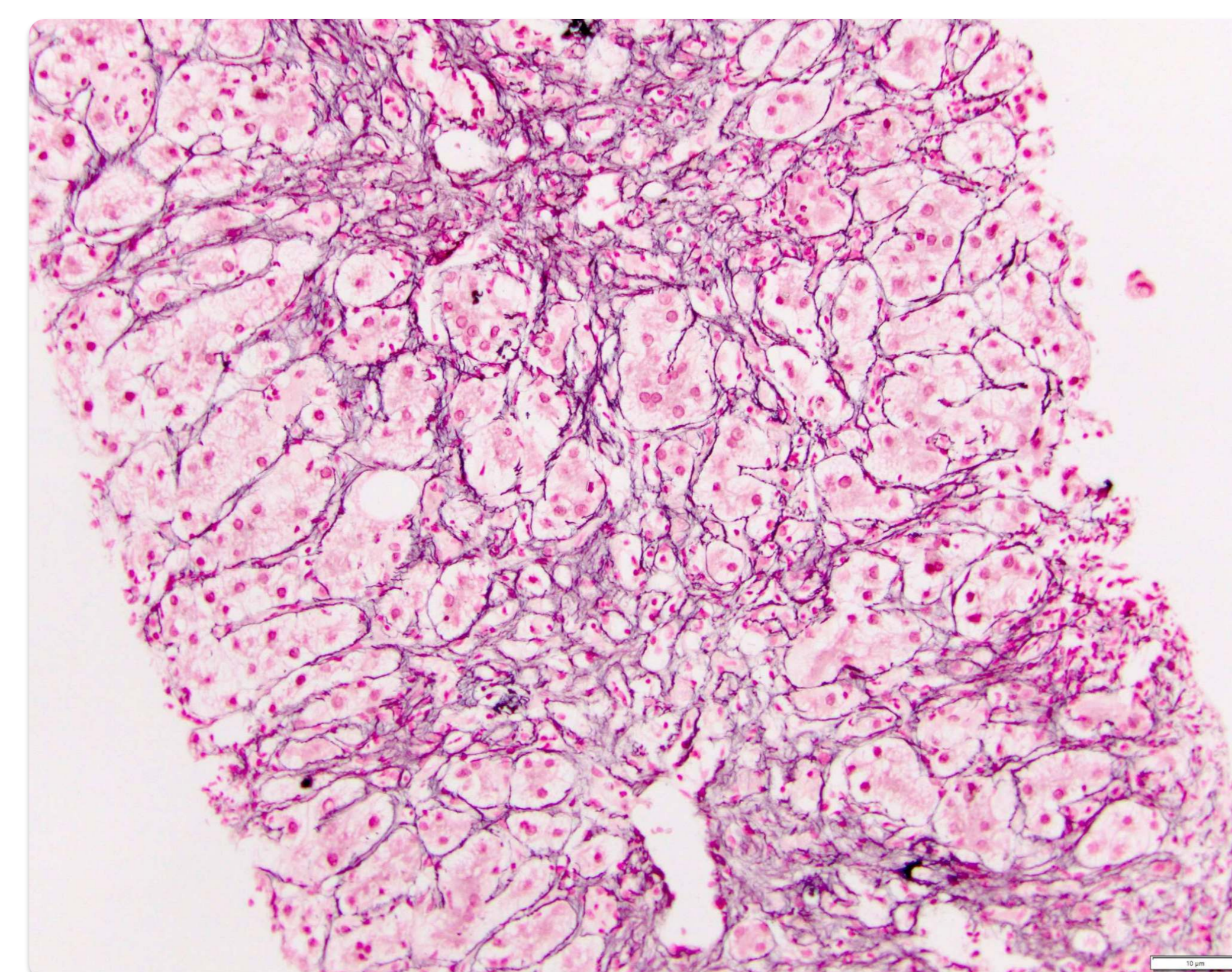
Areas of dropout with focal hemorrhage and hemosiderin laden macrophages.
Contributed by Monika Vyas, M.D.

Higher magnification of the lobule showing acidophil body.
Contributed by Monika Vyas, M.



Liver parenchyma with mononuclear inflammation and areas of parenchymal dropout with bile ductular proliferation in a case of hepatitis infection.
Contributed by Monika Vyas, M.D

Reticulin stain highlights areas of dropout with loss of reticulin framework.
Contributed by Monika Vyas, M.D



Liver cirrhosis in a patient with chronic hepatitis B.
Contributed by Monika Vyas, M.D